



深圳市嘉万光通信有限公司
KOC Communication Co., Ltd.

Copper Cabling Solution

Product Catalogue



KOC Communication Co., Ltd.

Add. : 4-6F, Block 3, Unibuilt Technology Industrial Park,
Huarong Road, Dalang, Longhua District, 518109 Shenzhen, China
Tel : + 86 0755-3367 3808 / 3367 3797
Fax : + 86 0755-3367 3791 / 3367 3792
E-mail : sales@koc.com.cn
Website : www.koc.com.cn / www.kamaxoptics.com



www.koc.com.cn



www.kamaxoptics.com



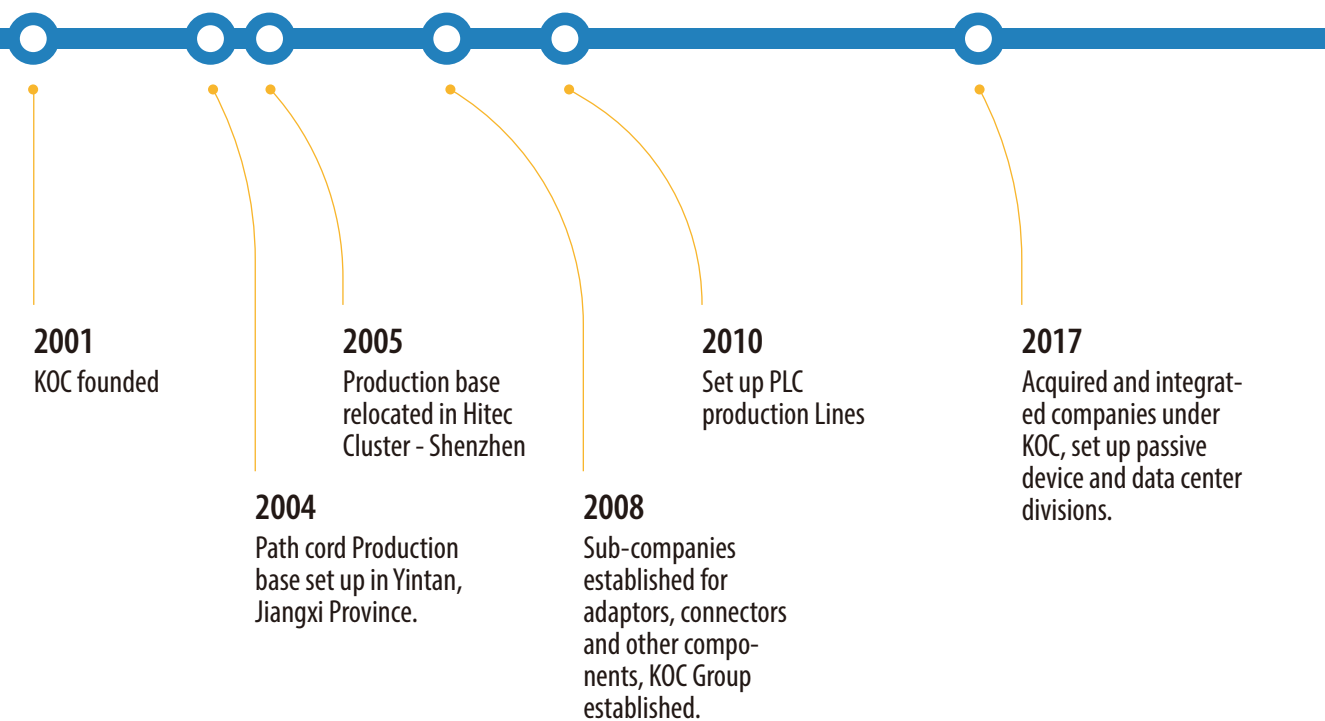
About KOC



Established in 2001, KOC Group is a state and municipal level Hitech Company, located in Longhua District, Shenzhen, China. KOC started its fiber optic connection trading at its early stage. After more than 10-year's developments, it becomes a professional manufacturer specialized in telecom, fiber optic network connection, passive devices, data center cabling etc.

KOC products are extensively applicable to telecom operators, fiber optic engineering, CCTV, broadband networks, FTTH, data center in more than 80 countries worldwide.

KOC provides reliable products and services to customers under the concept of high quality orientation.



Content

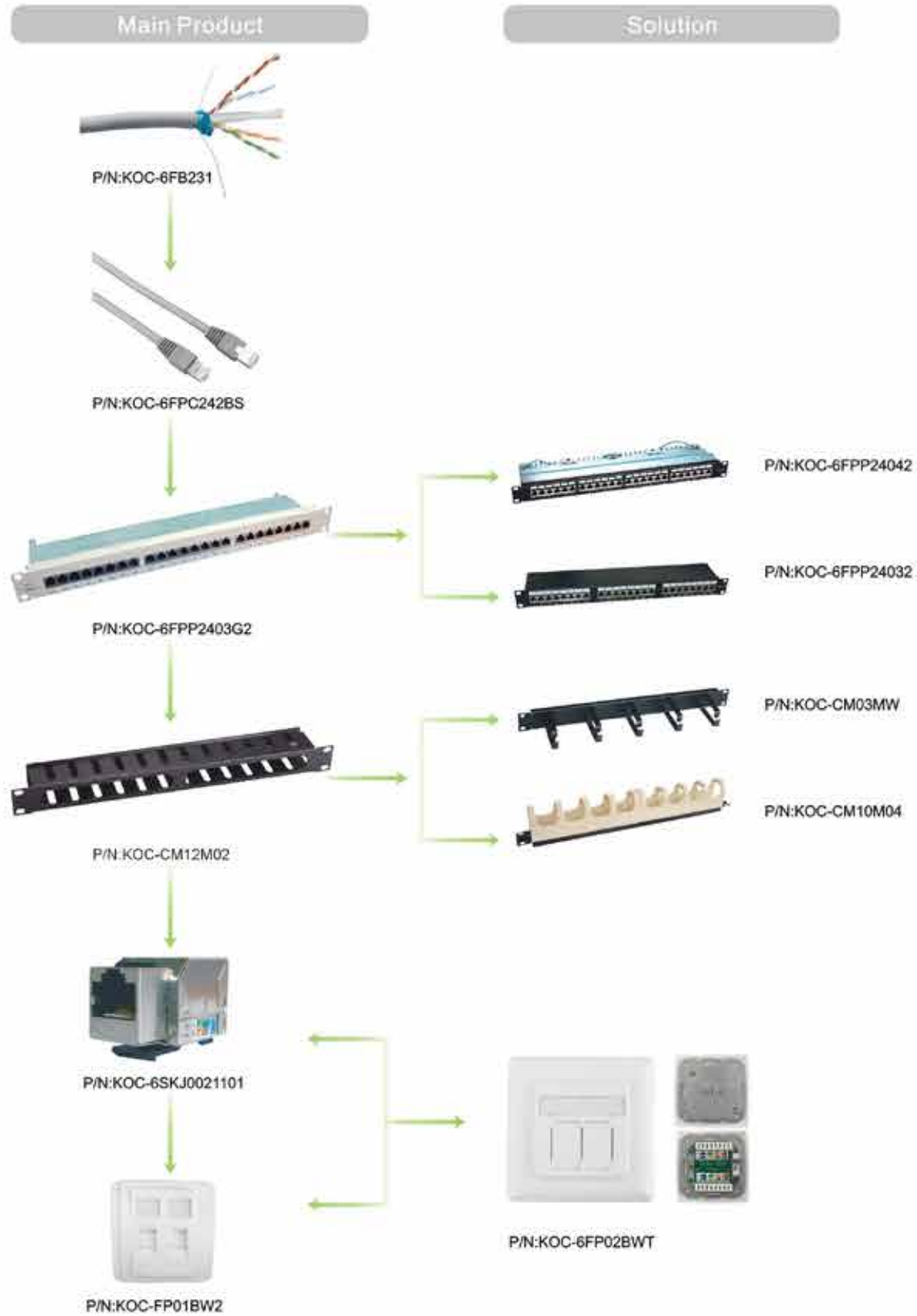
Copper system solution CAT.6 FTP	4.
Copper system solution CAT.6 UTP	5.
Copper system solution CAT.5e FTP	6.
Copper system solution CAT.5e UTP	7.
CAT.6 FTP (LAN Cable)	8. - 11.
Patch Cord FTP	12. - 13.
Cat 6A UTP/FTP Keystone Jack	14. - 16.
Cat 6 UTP/FTP Keystone Jack	17. - 20.
Cat 5E UTP/FTP Keystone Jack	21. - 24.
Voice UTP Keystone Jack	25.
Cat 6A UTP/FTP Patch Panel	26.
Cat 6 UTP/FTP Patch Panel	27. - 29.
Cat 5E UTP/FTP Patch Panel	30. - 32.
Empty Panel	33. - 35.
Voice Patch Panel	36.
Horizontal Cable Management	37. - 40.
Wring Blocks	41. - 43.
UK Style Faceplate	44. - 47.
Australian Style Faceplate	48.
French Style Faceplate	49.
Other Style Faceplate	50.
Back Box	51.
Surface Mount Boxes	52.
TOOLS	53. - 54.

Why KOC Can Promise Fast Delivery?



- "Ready to produce" materials
- Special designed textures & tools
- Simplified order handling process
- Well trained operators for multi-tasks
- Target to deliver assemblies to site
- 3~7 days from Receipt of PO
- The most rational and fast way of logistics
- Engineers: earliest entrants in fiber industry of China
- Sales: overseas working experiences
- Operation team: fortune global 500 working experience

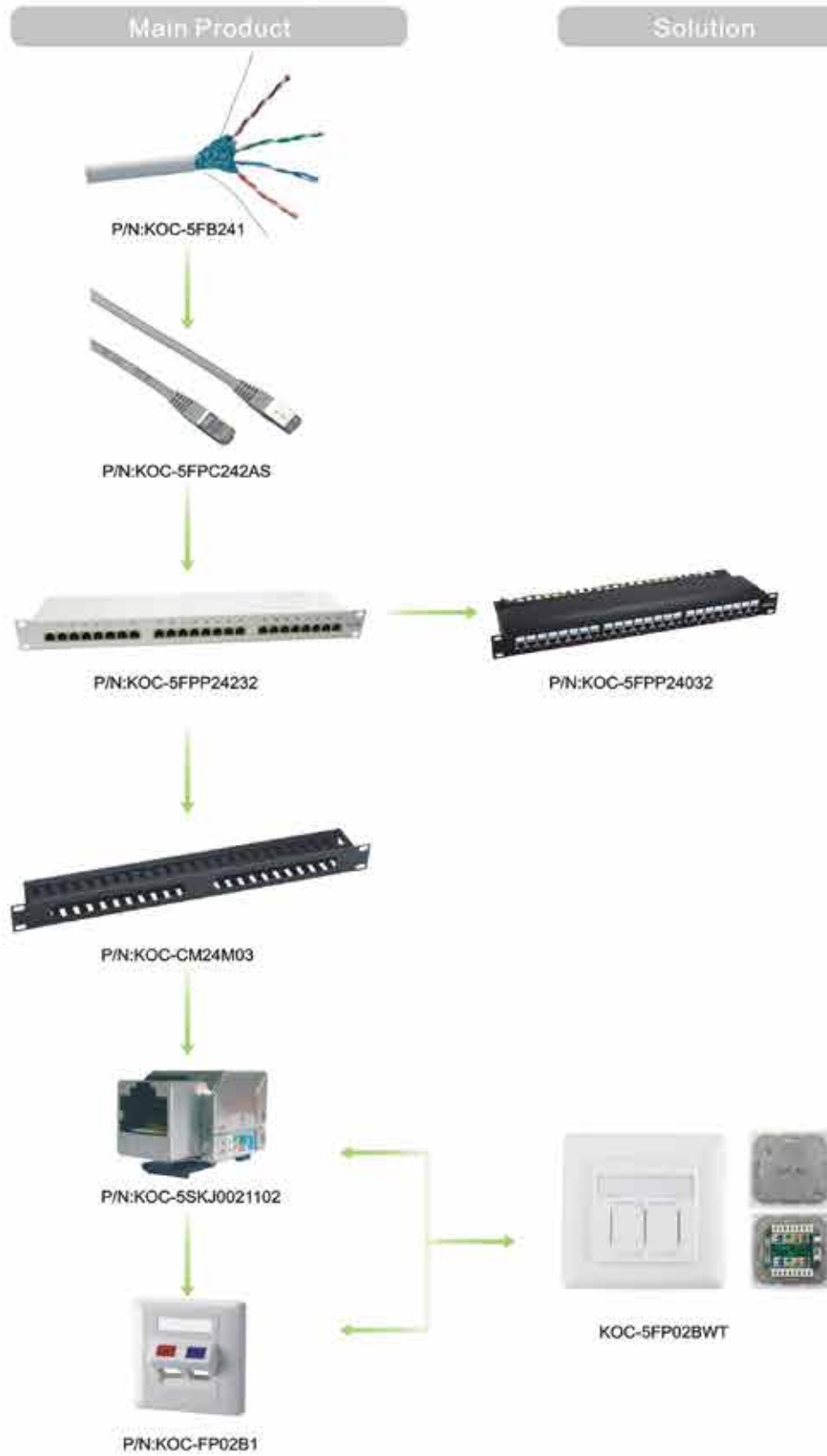
Copper system solution CAT.6 FTP



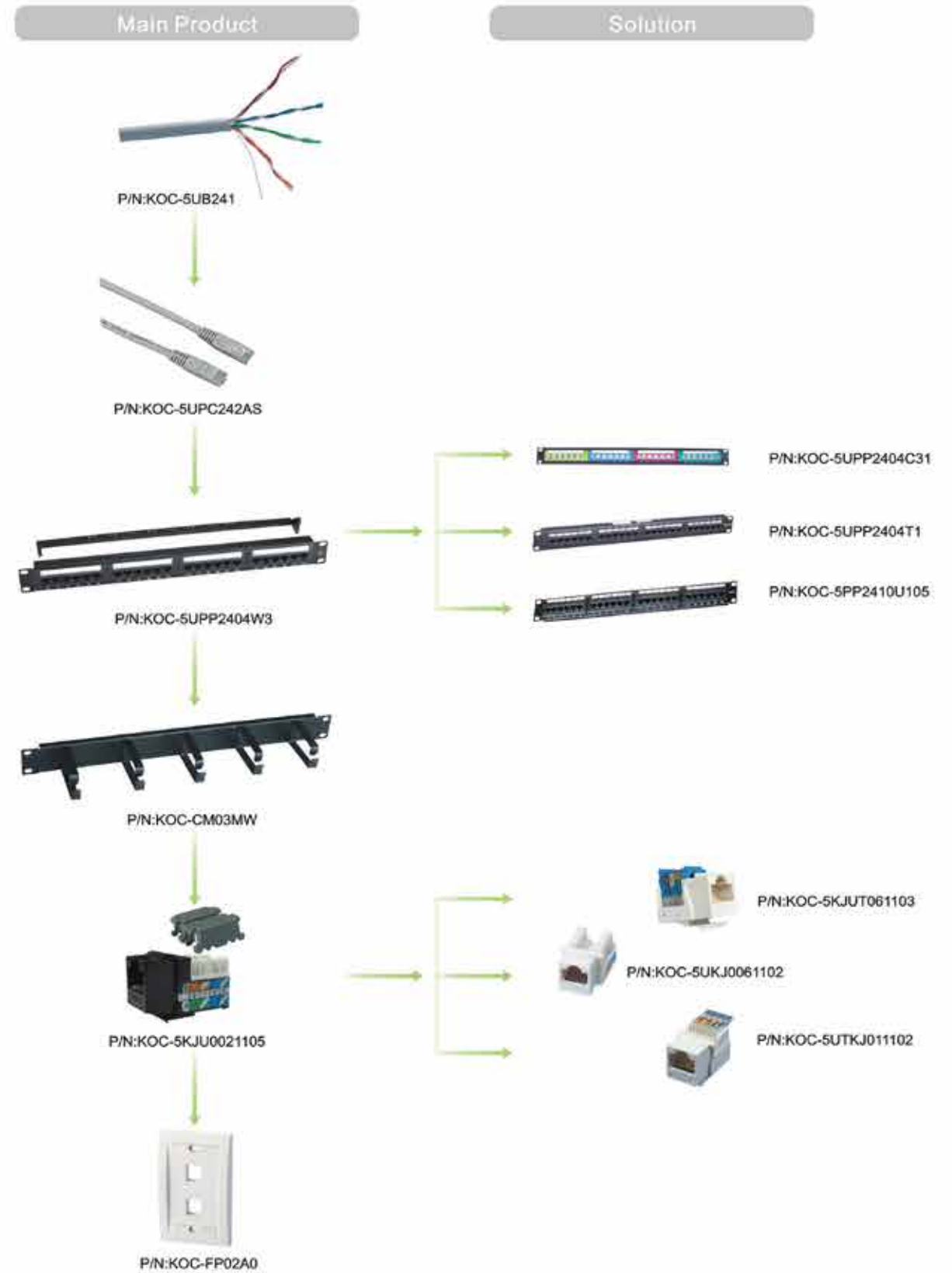
Copper system solution CAT.6 UTP



Copper system solution CAT.5e FTP

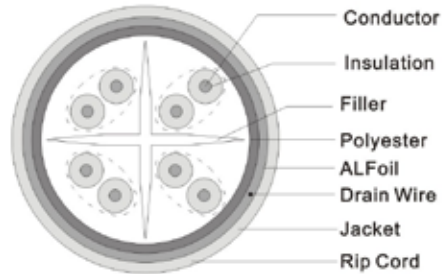


Copper system solution CAT.5e UTP



CAT.6 FTP (LAN Cable)

Presentation



4 pairs FTP Cat.6 CABLE

PRODUCT DESCRIPTION

The center conduction of the 4 pairs FTP Cat.6 CLIPSAL CABLE is made of 23AWG bare copper. This kind of cable also adopts PE material to be the dielectric, AL foil to be the shield and fireproof material to be the jacket. Besides, the "+" typer inner frame setted in the center is good for keeping the balance and quality, which are so important for the Cat.6 communication.

This Cat.6 FTP cable is conform to the related standards like ISO/IEC, TIA/EIA and EN.

All the electrical characteristics are exceed the lastest Cat.6 standards of ISO/IEC.

LSZH: means "Low Smoke Zero Halogen", which is the symbol of environmental protection.

ELECTRICAL CHARACTERISTICS

Return Resisitance: 14.9Ω/100m

Impedance: 100±5Ω

Static Electric Capacity: 46pF/m 1KHz

Unbalance Capacity: 100pF/100m

Roted Communicate Rate: 65%

PHYSICAL CHARACTERISTICS

Copper Diameter: 23AWG

Outer Diameter: 6.8 mm

Shielding Material: AL foil

Weight: 13.9 kg/kft

Minimum Bend Radius: 60mm

Maximum Pulling Tension: 10kg

Jacket material: PVC/LSZH

Roted Temperature: -20~60°C

Packing: Axles

APPLICATION

10/100/1000Mbps Ethernet;

100VG-AnyLAN;

Token ring; ATM155/ATM622, etc.

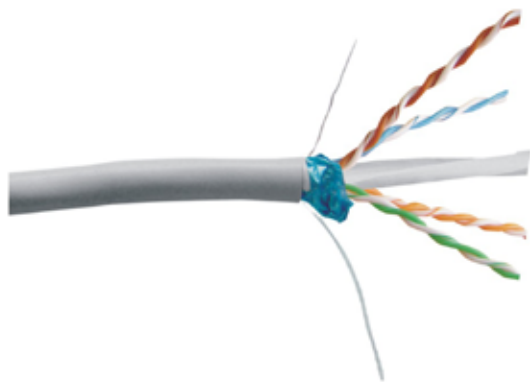
STANDARD

ISO/IEC-11801(2nd edition)

EN(2nd edition)

TIA/EIA-568B.2-1

Photo



P/N:KOC-6FB231

LAN Cable FTP Cat.6 Solid Grey Color 305M/Box, 23 AWG

Order Information

Package: 305m/box

Colour: Grey, Red, Blue, Yellow, Orange are available

4 pairs UTP Cat.6 CABLE

PRODUCT DESCRIPTION

4 pairs 100Ω Cat.6 cable, adopt 23AWG bare copper to be the center conduction, PE to be the dielectric and fireproof material to be the jacket. This cable is gray and conform to the standards like ISO/IEC, TIA/EIA and EN, all the electrical characteristics are even exceed the lastest Cat.6 standards of ISO/IEC. The "+" typer inner frame in the center ensures NEXT capacity and reasonable minimum bend radius.

LSZH: means "Low smoke Zero Halogen", which is the symbol of environmental protection.

ELECTRICAL CHARACTERISTICS

Impedance: 100±15Ω

Return Resisitance: 9.4Ω/100m

Unbalance Resisitance: ≤5%

Static Electric Capacity: 51pF/m 1KHz

Unbalance Capacity: 73.2pF/100m

Roted Communicate Rate: 65%

PHYSICAL CHARACTERISTICS

Copper Diameter: 23AWG

Impedance: 100±15Ω

Outer Diameter: 6.1±0.2 mm

Weight: 13.5 kg/kft

Minimum Bend Radius: 6-8×OD

Maximum Pulling Tension: ≤10

Jacket material: PVC/LSZH

Roted Temperature: -20~60°C

Packing: Axles & Carton

APPLICATION

10/100/1000Mbps Ethernet;

100VG-AnyLAN;

Token ring;

ATM155/ATM622 etc.

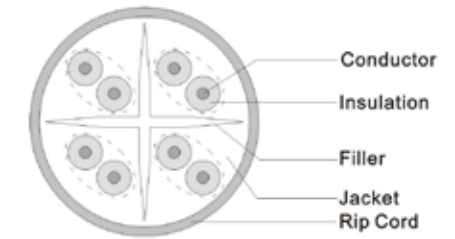
STANDARD

ISO/IEC-11801(2nd edition)

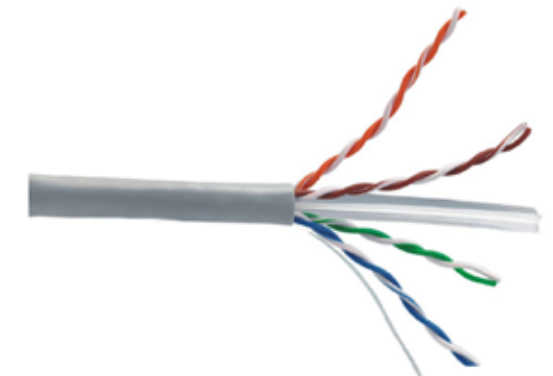
EN(2nd edition)

TIA/EIA-568B.2-1

Presentation



Photo



P/N:KOC-6UB231

LAN Cable UTP Cat.6 Solid Grey Color 305M/Box, 23 AWG

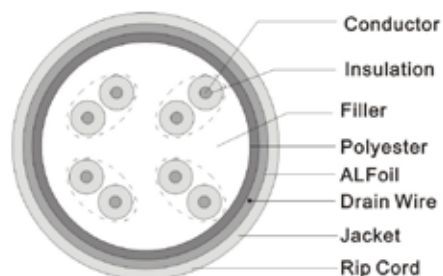
Order Information

Package: 305m/box

Colour: Grey, Red, Blue, Yellow, Orange are available

CAT.6 FTP (LAN Cable)

Presentation



4 pairs FTP Cat.5e CABLE

PRODUCT DESCRIPTION

This kind of cable use bare copper to be the center conduction, with the specification is 24AWG; PE is adopted to be the dielectric; Each pair of the coppers is covered by polyester film and AL foil even outer. The earth wire is installed between these two covers. The jacket is made of fireproof material, and it's so significant to the Cat.5e communication. Besides, LSZH is also at option. Various colors make network much easier. This Cat.5e FTP cable is well conformed to the ISO/IEC, TIA/EIA and EN standards and whose electrical characteristics are exceed the latest ISO/IEC Cat.5e standards.

ELECTRICAL CHARACTERISTICS

Impedance: $100 \pm 15 \Omega$
 Static Electric Capacity: max: 17.1nf/kf
 Resisitance: max: 28.6 Ω /kf
 Unbalance Resisitance: max 5%
 Unbalance Capacity: max 330pF/100m
 Roted Communicate Rate: 65%

PHYSICAL CHARACTERISTICS

Copper Diameter: 24AWG
 Outer Diameter: 6.1 mm
 Shielding Material: AL foil
 Earth Wire: No.24 bare copper
 Weight: 11 kg/kft
 Minimum Bend Radius: O.D.*6~8
 Maximum Pulling Tension: 10kg
 Jacket material: PVC/LSZH
 Roted Temperature: -20~60 $^{\circ}$ C
 Packing: Carton

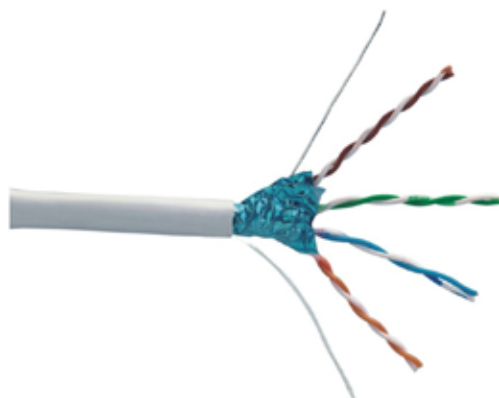
APPLICATION

10/100/1000Mbps Ethernet;
 100VG-AnyLAN;
 Token ring;
 ATM155/ATM622 etc.

STANDARD

ISO/IEC-11801
 EN-50173
 TIA/EIA-568-A-5

Photo



P/N:KOC-5FB241
 LAN Cable FTP Cat.5e Solid Grey Color
 305M/Box,24 AWG

Order Information

Package:305m/box
 Colour:Grey,Red,Blue,Yellow,Orange are available

4 pairs UTP Cat.5e CABLE

PRODUCT DESCRIPTION

This kind of cable use bare copper to be the center conduction-with the specification is 24AWG -and PE to be the dielectric. The jacket is made of fireproof material, which is so meanful to the Cat.5e communication.

This Cat.5e FTP cable is conform to the ISO/IEC, TIA/EIA and EN standards and the electrical characteristics are exceed the latest Cat.5e standards.

LSZH: means "Low Smoke Zero Halogen", which is the symbol of environmental protection.

ELECTRICAL CHARACTERISTICS

Impedance: $100 \pm 15 \Omega$
 Static Electric Capacity: max: 17.1nf/kf
 Resisitance: max: 28.6 Ω /kf
 Unbalance Resisitance: max 5%
 Unbalance Capacity: max 330pF/100m
 Roted Communicate Rate: 65%

PHYSICAL CHARACTERISTICS

Copper Diameter: 24AWG
 Outer Diameter: 5.0 mm
 Weight: 10.5 kg/kft
 Minimum Bend Radius: O.D.*4~6
 Maximum Pulling Tension: 10.0
 Jacket material: PVC/LSZH
 Roted Temperature: -20~60 $^{\circ}$ C

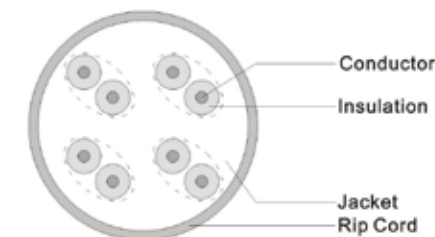
APPLICATION

10/100/1000Mbps Ethernet;
 100VG-AnyLAN;
 Token ring;
 ATM155/ATM622 etc.

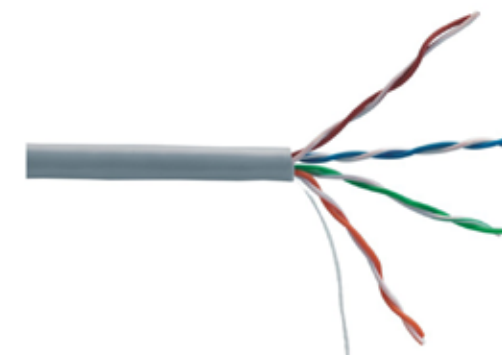
STANDARD

ISO/IEC-11801
 EN-50173
 TIA/EIA-568-B.2-1

Presentation



Photo



P/N:KOC-5UB241
 LAN Cable UTP Cat.5e Solid Grey Color
 305M/Box,24 AWG

Order Information

Package:305 m/box
 Colour:Grey,Red,Blue,Yellow,Orange are available

Patch Cord FTP

Photo



P/N:KOC-6FPC242BS
Patch Cord FTP Cat.6 Blue Color 1M, Molded Boot



P/N:KOC-5FPC242AS
Patch Cord FTP Cat.5e Grey Color 1M, Plain Molded Boot

Main Description of The Product:

Patchcords are high-performance FTP components available in broad range of lengths and easy-to-trace colors. They are designed to meet or exceed all Cat.6/ Cat.5e specifications, yet are fully backward compatible with lower systems.

23/24 AWG conductors are securely mated with a patented shield RJ45 plug design to deliver superior electrical performance with excellent repeatability. The unique anti-snagging feature simplifies removal and replacement of patchcords.

Applications:

Patch and equipment cords

Meets/exceeds:

Cat.5e/Class D, Cat.6/Class E requirements of ISO/IEC 11801, CENELEC EN50173-1 AND TIA/EIA 568B.2-1
UL Listed

Features:

Narrow Boot/Strain Relief

Supports high density installations
Cord fits into narrow jack locations
Uniform appearance between the Cat 6 and Cat 5e patch cords

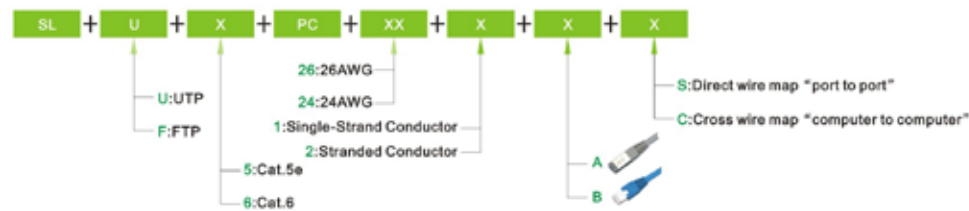
High performance

Maintains channel performance
Strong component performance
Exceeds cordage requirements of TIA 568b.2-1 and ISO/IEC 118801

Available in several standard colors and different standard lengths

Order Information

P/N:KOC-6FPC242BS	Patch Cord FTP Cat.6 Blue Color 1M, Molded Boot
P/N:KOC-5FPC242AS	Patch Cord FTP Cat.5e Grey Color 1M, Plain Molded Boot



Main Description of The Product:

Patchcords are high-performance UTP components available in an broad range of lengths and easy-to-trace colors. They are designed to meet or exceed all Cat.6/ Cat.5e specifications, yet are fully backward compatible with lower systems.

23/24 AWG conductors are securely mated with a patented shield RJ45 plug design to deliver superior electrical performance with excellent repeatability. The unique anti-snagging feature simplifies removal and replacement of patchcords.

Applications:

Patch and equipment cords

Meets/exceeds:

Cat.5e/Class D, Cat.6/Class E requirements of ISO/IEC 11801, CENELEC EN50173-1 AND TIA/EIA 568B.2-1
UL Listed

Features:

Narrow Boot/Strain Relief

Supports high density installations
Cord fits into narrow jack locations
Uniform appearance between the Cat 6 and Cat 5e patch cords

High performance

Maintains channel performance
Strong component performance
Exceeds cordage requirements of TIA 568b.2-1 and ISO/IEC 118801

Available in several standard colors and different standard lengths

Photo



P/N:KOC-6UPC242AS
Patch Cord UTP Cat.6 GreyColor 1M ,Plain Molded Boot



P/N:KOC-5UPC242CS
Patch Cord UTP Cat.5e SnaglessGrey Color 1M, Cap Molded Boot



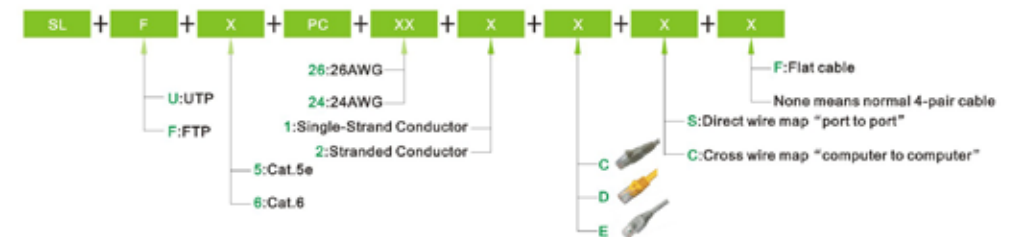
P/N:KOC-6UPC242ASF
Patch Cord UTP Cat.6 Flat Cable Blue Color 15M, Plain Molded Boot



P/N:KOC-5UPC24DS
Patch Cord UTP Cat.5e Snagless Yellow Color 1M, Ligule Molded Boot

Order Information

P/N:KOC-6UPC242AS	Patch Cord UTP Cat.6 Grey Color 1M ,Plain Molded Boot
P/N:KOC-6UPC242ASF	Patch Cord UTP Cat.6 Flat Cable Blue Color, Plain Molded Boot
P/N:KOC-5UPC242CS	Patch Cord UTP Cat.5e Snagless Grey Color 1M, Cap Molded Boot
P/N:KOC-5UPC24DS	Patch Cord UTP Cat.5e Snagless Yellow Color 1M, Ligule Molded Boot



Cat 6A UTP/FTP Keystone Jack

Product Description

CAT6A keystone jack surpassed all CAT6A performance requirements, comply with 10 Gigabit Ethernet application system, suitable for connection between FD to the outlet of the work area, providing up to 550MHz available bandwidth

Technical Characteristics

- Unique exterior design, simple, compact and beautiful
- Comply with ergonomic principle and with termination-free design
- Unique PCB circuit board design reduces EMI/RFI interference, low attenuation loss and high return loss
- Overall zinc alloy shielding design meets the industry standards
- Meet the requirements of both T568A/T568B with clear color labels
- Solid and corrosion phosphor bronze IDC enables over 250 terminations
- Accept 23 AWG wires, phosphor bronze contact with 50µ" gold plate, with a durability of 1500 matching cycles
- Easy installation with clear colored labels on termination cap
- Termination caps prevent wire from dropping off
- With backward compatibility of CAT 6 and lower classes

▲ KKS116-C6AS



Cat6A shielded keystone jacks

▲ KKS119-C6AS



Cat6A shielded keystone jacks

▲ KKS111-C6AS



Cat6A shielded keystone jacks

▲ KKS110-C6AS



Cat6A shielded keystone jacks

▲ KKS109-C6AS



Cat6A shielded keystone jacks

▲ KKS117-C6AS



Cat6A shielded keystone jacks(90 degree toolless)

▲ KKS118-C6AS



Cat6A shielded keystone jacks(180 degree toolless)

▲ KKP116-C6AS



Cat6A shielded plug keystone jacks

▲ KKA110-C6AU



Cat6A unshielded keystone jacks

▲ KKC109-C6AU



Cat6A unshielded keystone jacks

▲ KKA109-C6AU



Cat6A unshielded keystone jacks

▲ KKA111-C6AU-A



Cat6A unshielded keystone jacks(180 degree Black)

Cat 6A UTP/FTP Keystone Jack

▲ KKA109-C6AU-AUS

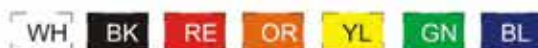


Cat6A unshielded keystone jacks(180 degree)

Order Information

Part Number	Description	Standard Color	Inner Box	Carton	Carton Measurement (L x W x H)	Carton Weight
KKS116-C6AS	Cat6A unshielded keystone jacks (180 degree toolless)	Silver	25PCS	250PCS	L 53.5cm x W 31.3cm x H 23.4cm	7.60KG
KKS119-C6AS	Cat6A shielded keystone jacks (180 degree toolless)	Silver	25PCS	250PCS	L 53.5cm x W 31.3cm x H 23.4cm	7.60KG
KKS111-C6AS	Cat6A shielded keystone jacks (90degree)	Silver	25PCS	250PCS	L 53.5cm x W 31.3cm x H 23.4cm	7.60KG
KKS110-C6AS	Cat6A shielded keystone jacks (180 degree toolless)	Silver	25PCS	250PCS	L 53.5cm x W 31.3cm x H 23.4cm	7.60KG
KKS109-C6AS	Cat6A shielded keystone jacks (180 degree toolless)	Silver	25PCS	250PCS	L 53.5cm x W 31.3cm x H 23.4cm	7.60KG
KKS117-C6AS	Cat6A shielded keystone jacks(90 degree toolless)	Silver	25PCS	250PCS	L 53.5cm x W 31.3cm x H 23.4cm	7.60KG
KKS118-C6AS	Cat6A shielded keystone jacks(180 degree toolless)	Silver	25PCS	250PCS	L 53.5cm x W 31.3cm x H 23.4cm	7.60KG
KKP116-C6AS	Cat6A shielded plug keystone jacks	Silver	25PCS	250PCS	L 53.5cm x W 31.3cm x H 23.4cm	7.60KG
KKA110-C6AU	Cat6A unshielded keystone jacks (180 degree)	White	25PCS	250PCS	L 53.5cm x W 31.3cm x H 23.4cm	4.00KG
KKC109-C6AU	Cat6A unshielded keystone jacks (180 degree toolless)	White	25PCS	250PCS	L 53.5cm x W 31.3cm x H 23.4cm	4.00KG
KKA109-C6AU	Cat6A unshielded keystone jacks (180 degree)	White	25PCS	250PCS	L 53.5cm x W 31.3cm x H 23.4cm	4.00KG
KKA111-C6AU-A	Cat6A unshielded keystone jacks(180 degree Black)	Black	25PCS	250PCS	L 53.5cm x W 31.3cm x H 23.4cm	4.00KG
KKA109-C6AU-AUS	Cat6A unshielded keystone jacks(180 degree)	White	25PCS	250PCS	L 53.5cm x W 31.3cm x H 23.4cm	4.00KG

* Unshielded module colors to choose from



Cat 6 UTP/FTP Keystone Jack

Product Description

CAT6 keystone jack surpassed all CAT6 performance requirements, comply with Gigabit Ethernet application system, suitable for connection between FD to the outlet of the work area, providing up to 350MHz available bandwidth

Technical Characteristics

- Unique exterior design, simple, compact and beautiful
- Comply with ergonomic principle and with termination-free design
- Unique PCB circuit board design reduces EMI/RFI interference, low attenuation loss and high return loss
- Overall zinc alloy shielding design meets the industry standards
- Meet the requirements of both T568A/T568B with clear color labels
- Solid and corrosion phosphor bronze IDC enables over 250 terminations
- Accept 23 AWG wires, phosphor bronze contact with 50 μ² gold plate, with a durability of 1500 matching recycles
- Easy installation with clear colored labels on termination cap
- Termination caps prevent wire from dropping off
- With backward compatibility of CAT5E and lower classes

▲ KKS116-C6S



Cat6 shielded keystone jacks

▲ KKS119-C6S



Cat6 shielded keystone jacks

▲ KKS111-C6S



Cat6 shielded keystone jacks

▲ KKS110-C6S



Cat6 shielded keystone jacks

Cat 6 UTP/FTP Keystone Jack

▲ KKS109-C6S



Cat6 shielded keystone jacks

▲ KKS117-C6S



Cat6 shielded keystone jacks 90 degree toolless

▲ KKC109-C6U



Cat6 unshielded keystone jacks

▲ KKA110-C6U



Cat6 unshielded keystone jacks

▲ KKB106-C6U



Cat6 unshielded keystone jacks

▲ KKB108-C6U



Cat6 unshielded keystone jacks

▲ KKA111-C6U-A



Cat6 unshielded keystone jacks (180 degree Black)

▲ KKC119-C6U



Cat6 unshielded keystone jacks (180 degree toolless)

▲ KKB106-C6U-P



Cat6 unshielded keystone jacks

▲ KKC108-C6U-P



Cat6 unshielded keystone jacks

▲ KKA109-C6U-AUS



Cat6 unshielded keystone jacks 180 degree

▲ KKD106-C6U



Cat6 unshielded keystone jacks

▲ KKB108-C6U-P



Cat6 unshielded keystone jacks

▲ KKA109-C6U



Cat6 unshielded keystone jacks

Cat 6 UTP/FTP Keystone Jack

Order Information

Part Number	Description	Standard Color	Inner Box	Carton	Carton Measurement (L×W×H)	Carton Weight
KKS116-C6S	Cat6 shielded keystone jacks (180degree)	Silver	25PCS	250PCS	L 53.5cm × W 31.3cm × H 23.4cm	7.60KG
KKS119-C6S	Cat6 shielded keystone jacks (180 degree toolless)	Silver	25PCS	250PCS	L 53.5cm × W 31.3cm × H 23.4cm	7.60KG
KKS111-C6S	Cat6 shielded keystone jacks (90degree)	Silver	25PCS	250PCS	L 53.5cm × W 31.3cm × H 23.4cm	7.60KG
KKS110-C6S	Cat6 shielded keystone jacks (180 degree toolless)	Silver	25PCS	250PCS	L 53.5cm × W 31.3cm × H 23.4cm	7.60KG
KKS109-C6S	Cat6 shielded keystone jacks (180 degree toolless)	Silver	25PCS	250PCS	L 53.5cm × W 31.3cm × H 23.4cm	7.60KG
KKS117-C6S	Cat6 shielded keystone jacks(90 degree toolless)	Silver	25PCS	250PCS	L 53.5cm × W 31.3cm × H 23.4cm	7.60KG
KKB106-C6U	Cat6 unshielded keystone jacks (90degree)	Silver	25PCS	250PCS	L 53.5cm × W 31.3cm × H 23.4cm	4.00KG
KKB108-C6U	Cat6 unshielded keystone jacks (90 degree)	White	25PCS	250PCS	L 53.5cm × W 31.3cm × H 23.4cm	4.00KG
KKB106-C6U-P	Cat6 unshielded keystone jacks (90 degree)	White	25PCS	250PCS	L 53.5cm × W 31.3cm × H 23.4cm	4.00KG
KKC108-C6U-P	Cat6 unshielded keystone jacks (90 degree dustproof toolless)	White	25PCS	250PCS	L 53.5cm × W 31.3cm × H 23.4cm	4.00KG
KKB108-C6U-P	Cat6 unshielded keystone jacks (90 degree dustproof)	White	25PCS	250PCS	L 53.5cm × W 31.3cm × H 23.4cm	4.00KG
KKA109-C6U	Cat6 unshielded keystone jacks (180 degree)	White	25PCS	250PCS	L 53.5cm × W 31.3cm × H 23.4cm	4.00KG
KKC109-C6U	Cat6 unshielded keystone jacks (180 degree toolless)	White	25PCS	250PCS	L 53.5cm × W 31.3cm × H 23.4cm	4.00KG
KKA110-C6U	Cat6 unshielded keystone jacks (180 degree)	White	25PCS	250PCS	L 53.5cm × W 31.3cm × H 23.4cm	4.00KG
KKA111-C6U-A	Cat6 unshielded keystone jacks (180 degree Black)	Black	25PCS	250PCS	L 53.5cm × W 31.3cm × H 23.4cm	4.00KG
KKC119-C6U	Cat6 unshielded keystone jacks (180 degree toolless)	White	25PCS	250PCS	L 53.5cm × W 31.3cm × H 23.4cm	4.00KG
KKA109-C6U-AUS	Cat6 unshielded keystone jacks(180 degree)	White	25PCS	250PCS	L 53.5cm × W 31.3cm × H 23.4cm	4.00KG
KKD106-C6U	Cat6 unshielded keystone jacks	White	25PCS	250PCS	L 53.5cm × W 31.3cm × H 23.4cm	4.00KG

* Unshielded module colors to choose from



Cat 5E UTP/FTP Keystone Jack

Product Description

DOPPLER CAT5E keystone jack surpassed all CAT5E performance requirements, comply with Fast Ethernet application system, suitable for connection between FD to the outlet of the work area, providing up to 250MHz available bandwidth

Technical Characteristics

- Unique exterior design, simple, compact and beautiful
- Comply with ergonomic principle and with termination-free design
- Unique PCB circuit board design reduces EMI/RFI interference, low attenuation loss and high return loss
- Overall zinc alloy shielding design meets the industry standards
- Meet the requirements of both T568A/T568B with clear color labels
- Solid and corrosion phosphor bronze IDC enables over 250 terminations
- Accept 24 AWG wires, phosphor bronze contact with 50μ" gold plate, with a durability of 1500 matching recycles
- Easy installation with clear colored labels on termination cap
- Termination caps prevent wire from dropping off
- With backward compatibility of CAT5 and lower classes

▲ KKS116-C5ES



Cat5e shielded keystone jacks

▲ KKS119-C5ES



Cat5e shielded keystone jacks

▲ KKS111-C5ES



Cat5e shielded keystone jacks

▲ KKS110-C5ES



Cat5e shielded keystone jacks

Cat 5E UTP/FTP Keystone Jack

▲ KKS109-C5ES



Cat5e shielded keystone jacks

▲ KKB106-C5EU



Cat5e unshielded keystone jacks

▲ KKC109-C5EU



Cat5e unshielded keystone jacks

▲ KKA110-C5EU



Cat5e unshielded keystone jacks

▲ KKD106-C5EU



Cat5e unshielded keystone jacks

▲ KKB108-C5EU



Cat5e unshielded keystone jacks

▲ KKE108-C5EU-BK



Inline coupler

▲ KKA109-C5EU-AUS



Cat5e unshielded keystone jacks(180 degree)

▲ KKB106-C5EU-P



Cat5e unshielded keystone jacks

▲ KKB108-C5EU-P



Cat5e unshielded keystone jacks

▲ KKA111-C5EU-A



Cat5e unshielded keystone jacks(180 degree Black)

▲ KKE101-C5EU



Surface 1-port keystone jacks

▲ KKC108-C5EU-P



Cat5e unshielded keystone jacks

▲ KKA109-C5EU



Cat5e unshielded keystone jacks

▲ KKE102-C5EU



Surface 2-port keystone jacks

Cat 5E UTP/FTP Keystone Jack

Order Information

Part Number	Description	Standard Color	Inner Box	Carton	Carton Measurement (L x W x H)	Carton Weight
KKS116-CSES	Cat5e shielded keystone jacks (180 degree toolless)	Silver	25PCS	250PCS	L 53.5cm x W 31.3cm x H 23.4cm	7.60KG
KKS119-CSES	Cat5e shielded keystone jacks (180 degree toolless)	Silver	25PCS	250PCS	L 53.5cm x W 31.3cm x H 23.4cm	7.60KG
KKS111-CSES	Cat5e shielded keystone jacks (90degree)	Silver	25PCS	250PCS	L 53.5cm x W 31.3cm x H 23.4cm	7.60KG
KKS110-CSES	Cat5e shielded keystone jacks (180 degree toolless)	Silver	25PCS	250PCS	L 53.5cm x W 31.3cm x H 23.4cm	7.60KG
KKS109-CSES	Cat5e shielded keystone jacks (180 degree toolless)	Silver	25PCS	250PCS	L 53.5cm x W 31.3cm x H 23.4cm	7.60KG
KKB106-C5EU	Cat5e unshielded keystone jacks (90 degree)	White	25PCS	250PCS	L 53.5cm x W 31.3cm x H 23.4cm	4.00KG
KKD106-C5EU	Cat5e unshielded keystone jacks (90 degree)	White	25PCS	250PCS	L 53.5cm x W 31.3cm x H 23.4cm	4.00KG
KKB109-C5EU	Cat5e unshielded keystone jacks (90 degree)	White	25PCS	250PCS	L 53.5cm x W 31.3cm x H 23.4cm	4.00KG
KKB106-C5EU-P	Cat5e unshielded keystone jacks (90 degree dustproof)	White	25PCS	250PCS	L 53.5cm x W 31.3cm x H 23.4cm	4.00KG
KKB109-C5EU-P	Cat5e unshielded keystone jacks (90 degree dustproof)	White	25PCS	250PCS	L 53.5cm x W 31.3cm x H 23.4cm	4.00KG
KKC106-C5EU-P	Cat5e unshielded keystone jacks (90 degree dustproof toolless)	White	25PCS	250PCS	L 53.5cm x W 31.3cm x H 23.4cm	4.00KG
KKA109-C5EU	Cat5e unshielded keystone jacks (180 degree)	White	25PCS	250PCS	L 53.5cm x W 31.3cm x H 23.4cm	4.00KG
KKC109-C5EU	Cat5e unshielded keystone jacks (180 degree toolless)	White	25PCS	250PCS	L 53.5cm x W 31.3cm x H 23.4cm	4.00KG
KKA110-C5EU	Cat5e unshielded keystone jacks (180 degree toolless)	White	25PCS	250PCS	L 53.5cm x W 31.3cm x H 23.4cm	4.00KG
KKE108-C5EU-BK	inline coupler	White	25PCS	250PCS	L 53.5cm x W 31.3cm x H 23.4cm	4.00KG
KKA109-C5EU-AUS	Cat5e unshielded keystone jacks(180 degree)	White	25PCS	250PCS	L 53.5cm x W 31.3cm x H 23.4cm	4.00KG
KKA111-C5EU-A	Cat5e unshielded keystone jacks(180 degree Black)	Black	25PCS	250PCS	L 53.5cm x W 31.3cm x H 23.4cm	4.00KG
KKE101-C5EU	surface 1-port keystone jacks(90 degree)	White	25PCS	250PCS	L 53.5cm x W 31.3cm x H 23.4cm	4.00KG
KKE102-C5EU	surface 2-port keystone jacks(90 degree)	White	25PCS	250PCS	L 53.5cm x W 31.3cm x H 23.4cm	4.00KG

* Unshielded module colors to choose from



Voice UTP Keystone Jack

Product Description

This insert works great to add a Telecommunication connection into any room of the house office, it features dual color-coded wiring labels with both T568A and T568B wiring pattern, a rear termination field for easy termination of a jack while installed in a wall plate, surface mount boxes, and blank patch panels for a wide variety of Applications.

Technical Characteristics

- Available in Telecommunication, T568 A/B wiring, meet or exceed TIA/EIA voice requirements
- Housing : high temperature thermoplastic
- Compact jack design, 6 positions and 6 conductors
- Contact : phosphor bronze , phosphor bronze with 6 to 50 μ 'gold plate
- Accept 22-24 AWG solid with a insulation diameter of 0.4-0.6 mm
- Easy to be terminated, low attenuation loss and high return loss
- High reliability and superior performance
- Available in different colors

▲ KKR106-C3U



voice keystone jack(RJ port)

▲ KKR107-C3U



voice keystone jack

Order Information

Part Number	Description	Standard Color	Inner Box	Carton	Carton Measurement (L x W x H)	Carton Weight
KKR106-C3U	voice keystone jack(RJ port)(90 degree)	White	25PCS	250PCS	L 53.5cm x W 31.3cm x H 23.4cm	4.00KG
KKR107-C3U	voice keystone jack (90 degree)	White	25PCS	250PCS	L 53.5cm x W 31.3cm x H 23.4cm	3.80KG

Cat 6A UTP/FTP Patch Panel

Product Description

With toolless modular design, CAT6A 24-port patch panel matches and exceeds CAT6A 500MHZ connecting hardware specifications, suitable for interaction and termination of horizontal cabling between devices, equipment and centralized points.

Technical Characteristics

- Unique exterior design, simple, compact and beautiful
- Unique PCB circuit board design reduces EMI/RFI interference, low attenuation loss and high return loss
- High strength die-casted zinc alloy Shielding design meets the industry shielding standards
- Solid and corrosion phosphor bronze DC ensures over 250 terminations
- Termination caps prevent wire from dropping off
- With backward compatibility of CAT6 and lower classes
- With 50 μ " gold plate, durability is 1500 matching recycles
- Solid and easy installation design saves installation and operation costs
- Comply with ergonomic principle and termination-free design
- Be compatible with 19-inch equipment racks, cabinets, and wall mount shelf
- All ports are clearly labeled, especially the large label in the front are helpful for ports identification

▲ KPA124-C6AS



Cat6A FTP 24 ports patch panel

▲ KPA124-C6AU



Cat6A UTP 24 ports patch panel

Order Information

Part Number 型号	Description	Standard Color	Inner Box	Carton	Carton Measurement (L x W x H)	Carton Weight
KPA124-C6AS	Cat6A FTP 24 ports patch panel	Black	1PCS	10PCS	L 53.5cm x W 31.3cm x H 23.4cm	17.00KG
KPA124-C6AU	Cat6A UTP 24 ports patch panel	Black	1PCS	10PCS	L 53.5cm x W 31.3cm x H 23.4cm	10.00KG

Cat 6 UTP/FTP Patch Panel

Product Description

CAT6 24-port patch panel matches and exceeds CAT6 350MHZ connecting hardware specifications, comply with Gigabit Ethernet applications, suitable for interaction and termination of horizontal cabling between devices, equipment and centralized points.

Technical Characteristics

- Unique exterior design, simple, compact and beautiful
- Unique PCB circuit board design reduces EMI/RFI interference, low attenuation loss and high return loss
- High strength die-casted zinc alloy Shielding design meets the industry shielding standards
- Solid and corrosion phosphor bronze DC ensures over 250 terminations
- Termination caps prevent wire from dropping off
- With backward compatibility of CAT6E and lower classes
- With 50 μ " gold plate, durability is 1500 matching recycles
- Solid and easy installation design saves installation and operation costs
- Comply with ergonomic principle and termination-free design
- Be compatible with 19-inch equipment racks, cabinets, and wall mount shelf
- All ports are clearly labeled, especially the large label in the front are helpful for ports identification

▲ KPA124-C6S



Cat6 FTP 24 ports patch panel

▲ KPS124-C6S



Cat6 FTP 24 ports patch panel

▲ KPS124-C6S-0.5U



Cat6 FTP 0.5U 24 ports patch panel

Cat 6 UTP/FTP Patch Panel

▲ KPS124-C6U



Cat6 UTP 24 ports patch panel

▲ KPA124-C6U



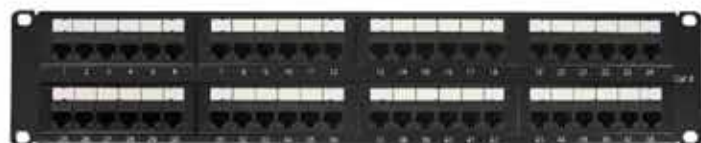
Cat6 UTP 24 ports patch panel

▲ KPD124-C6U



Cat6 UTP 24 ports patch panel

▲ KPD148-C6U



Cat6 UTP 48 ports patch panel

▲ KPE112-C6U



Wall Style Cat6 UTP 12 ports patch panel

Order Information

Part Number	Description	Standard Color	Inner Box	Carton	Carton Measurement (L x W x H)	Carton Weight
KPA124-C6S	Cat6 FTP 24 ports patch panel	Black	1PCS	10PCS	L 53.5cm x W 31.3cm x H 23.4cm	17.00KG
KPS124-C6S	Cat6 FTP 24 ports patch panel (90 degree)	Black	1PCS	5PCS	L 53.5cm x W 31.3cm x H 23.4cm	10.00KG
KPS124-C6S-0.5U	Cat6 FTP 24 ports patch panel (90 degree)	Black	1PCS	5PCS	L 53.5cm x W 31.3cm x H 23.4cm	8.60KG
KPS124-C6U	Cat6 UTP 24 ports patch panel (90 degree)	Black	1PCS	5PCS	L 53.5cm x W 31.3cm x H 23.4cm	10.00KG
KPA124-C6U	Cat6 UTP 24 ports patch panel	Black	1PCS	10PCS	L 53.5cm x W 31.3cm x H 23.4cm	10.00KG
KPD124-C6U	Cat6 UTP 24 ports patch panel (180 degree)	Black	1PCS	10PCS	L 53.5cm x W 31.3cm x H 23.4cm	8.20KG
KPD148-C6U	Cat6 UTP 48 ports patch panel (180 degree)	Black	1PCS	10PCS	L 53.5cm x W 31.3cm x H 23.4cm	16.40KG
KPE112-C6U	Cat6 UTP 12 ports patch panel	Black	1PCS	20PCS	L 53.5cm x W 31.3cm x H 23.4cm	4.10KG

Cat 5E UTP/FTP Patch Panel

Product Description

CAT5E FTP 24-port patch panel matches and exceeds CAT5E 250MHZ connecting hardware specifications, suitable for interaction and termination of horizontal cabling between devices, equipment and centralized points.

Technical Characteristics

- Unique exterior design, simple, compact and beautiful
- Unique PCB circuit board design reduces EMI/RFI interference, low attenuation loss and high return loss
- High strength die-casted zinc alloy Shielding design meets the industry shielding standards
- Solid and corrosion phosphor bronze DC ensures over 250 terminations
- Termination caps prevent wire from dropping off
- With backward compatibility of CAT5 and lower classes
- With 50 μ " gold plate, durability is 1500 matching recycles
- Solid and easy installation design saves installation and operation costs
- Comply with ergonomic principle and termination-free design
- Be compatible with 19-inch equipment racks, cabinets, and wall mount shelf
- All ports are clearly labeled, especially the large label in the front are helpful for ports identification
- With cable management in the rear for effective guidance of cables and termination points

▲ KPA124-C5ES



Cat5e FTP 24 ports patch panel

▲ KPS124-C5ES



Cat5e FTP 24 ports patch panel

▲ KPS124-C5EU



Cat5e UTP 24 ports patch panel

▲ KPA124-C5EU



Cat5e UTP 24 ports patch panel

▲ KPD124-C5EU



Cat5e UTP 24 ports patch panel

▲ KPD148-C5EU



Cat5e UTP 48 ports patch panel

▲ KPE112-C5EU



Cat5e UTP 12 ports patch panel

Cat 5E UTP/FTP Patch Panel

Order Information

Part Number	Description	Standard Color	Inner Box	Carton	Carton Measurement (L x W x H)	Carton Weight
KPA124-C5ES	Cat5e FTP 24 ports patch panel	Black	1PCS	10PCS	L 53.5cm x W 31.3cm x H 23.4cm	17.00KG
KPS124-C5ES	Cat5e FTP 24 ports patch panel (90 degree)	Black	1PCS	5PCS	L 53.5cm x W 31.3cm x H 23.4cm	10.00KG
KPS124-C5EU	Cat5e UTP 24 ports patch panel (90 degree)	Black	1PCS	5PCS	L 53.5cm x W 31.3cm x H 23.4cm	8.60KG
KPA124-C5EU	Cat5e UTP 24 ports patch panel	Black	1PCS	10PCS	L 53.5cm x W 31.3cm x H 23.4cm	10.00KG
KPD124-C5EU	Cat5e UTP 24 ports patch panel (180 degree)	Black	1PCS	20PCS	L 53.5cm x W 31.3cm x H 23.4cm	19.00KG
KPD148-C5EU	Cat5e UTP 48 ports patch panel (180 degree)	Black	1PCS	10PCS	L 53.5cm x W 31.3cm x H 23.4cm	16.40KG
KPE112-C5EU	Cat5e UTP 12 ports patch panel	Black	1PCS	20PCS	L 53.5cm x W 31.3cm x H 23.4cm	4.10KG

Empty Panel

Product Description

With toolless modular design, empty 24-port patch panel matches the installation of different kinds of modular jacks, comply with Gigabit Ethernet applications, suitable for interaction and termination of horizontal cabling between devices, equipment and centralized points, fit for 19" equipment racks and cabinets.

Technical Characteristics

- Unique exterior design, simple, compact and beautiful
- Unique PCB circuit board design reduces EMI/RFI interference, low attenuation loss and high return loss
- High strength die-casted zinc alloy Shielding design meets the industry shielding standards
- Solid and corrosion phospher bronze DC ensures over 250 terminations
- Termination caps prevent wire from dropping off
- Solid and easy installation design saves installation and operation costs
- Comply with ergonomic principle and termination-free design
- Be compatible with 19-inch equipment racks, cabinets, and wall mount shelf

▲ KPB124



24 ports Empty patch panel

▲ KPB224



24 ports UTP Empty patch panel

▲ KPB324



24 ports Empty patch panel(Removable & Angled)

Empty Panel

▲ KPB424



24 ports Empty patch panel (Removable)

▲ KPB524



24 ports FTP Empty patch panel

▲ KPB624-U



24 ports UTP Empty patch panel

▲ KPB624-S



24 ports FTP Empty patch panel

▲ KPB724



24 ports Empty patch panel (Steel)

▲ KPB824



24 ports UTP Empty patch panel

Empty Panel

▲ KPB924



0.5U 24 ports Empty patch panel Black

Order Information

Part Number	Description	Standard Color	Inner Box	Carton	Carton Measurement (L x W x H)	Carton Weight
KPB124	24 ports Empty patch panel	Black	1PCS	10PCS	L 53.5cm x W 31.3cm x H 23.4cm	7.80KG
KPB224	24 ports UTP Empty patch panel	Black	1PCS	10PCS	L 53.5cm x W 31.3cm x H 23.4cm	7.80KG
KPB324	24 ports Empty patch panel (Removable & Angle)	Black	1PCS	8PCS	L 54.2cm x W 30.2cm x H 27.9cm	7.80KG
KPB424	24 ports Empty patch panel (Removable)	Black	1PCS	10PCS	L 53.5cm x W 31.3cm x H 23.4cm	7.80KG
KPB524	24 ports UTP Empty patch panel	Black	1PCS	10PCS	L 53.5cm x W 31.3cm x H 23.4cm	7.80KG
KPB624-U	24 ports UTP Empty patch panel	Black	1PCS	10PCS	L 53.5cm x W 31.3cm x H 23.4cm	7.80KG
KPB624-S	24 ports FTP Empty patch panel	Black	1PCS	10PCS	L 53.5cm x W 31.3cm x H 23.4cm	7.80KG
KPB724	24 ports Empty patch panel (Steel)	Black	1PCS	10PCS	L 53.5cm x W 31.3cm x H 23.4cm	7.80KG
KPB824	24 ports UTP Empty patch panel	Black	1PCS	10PCS	L 53.5cm x W 31.3cm x H 23.4cm	7.80KG
KPB924	0.5U 24 ports Empty patch panel	Black	1PCS	25PCS	L 52.0cm x W 41.0cm x H 18.0cm	7.80KG

Voice Patch Panel

Product Description

Voice patch panels are the perfect solutions for bringing voice to your cable rack ,pre-configured in 25 and 50 port densities and designed specially for voice grade application .

Technical Characteristics

- Design to mount to any standard 19" rack or cabinet
- Space saving, high-density 1U
- Black Electrostatic Powder-Coated Steel: phosphor bronze with tin plating over nickel.
- 110 krone punch down tools are available.
- Phosphor bronze with 6-50 micro inches gold plated.
- Color Coded TIA/EIA 568A (international) and 568B (AT&T Standard) Wiring For Easy Installation.
- Metal sheet: Corrosion resistant steel.
- Plastic :re self -extinguish high impact plastic.

▲ KPT125-C3U



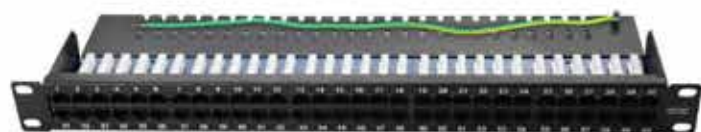
25 ports Voice patch panel

▲ KPT150-C3U



50 ports Voice patch panel

▲ KPT160-C3U



60 ports Voice patch panel

Order Information

Part Number	Description	Standard Color	Inner Box	Carton	Carton Measurement (L x W x H)	Carton Weight
KPT125-C3U	25 ports Voice patch panel	Black	1PCS	5PCS	L 53.5cm x W 31.3cm x H 23.4cm	8.50KG
KPT150-C3U	50 ports Voice patch panel	Black	1PCS	5PCS	L 53.5cm x W 31.3cm x H 23.4cm	10.20KG
KPT160-C3U	60 ports Voice patch panel	Black	1PCS	5PCS	L 53.5cm x W 31.3cm x H 23.4cm	10.20KG

Horizontal Cable Management

Product Description

Be compatible with 19-inch equipment racks, cabinets, and wall mount shelf, suitable for interaction and termination of horizontal cabling between devices, equipment and centralized points.

Technical Characteristics

- Made of high quality ABS plastic to avoid scratching, with detachable-surface faceplate design
- Accomplish a clean and beautiful cabling system with simple, flexible, effective, convenient and safe feature.
- Unique exterior design, simple, compact and beautiful
- Black appearance enables its combination of any other equipment in data center

▲ KMC101



single recessed cable management 1U

▲ KMC103



single recessed cable management 1U

▲ KMC104



single recessed cable management 1U

Horizontal Cable Management

▲ KMC105



metal cable management 1U

▲ KMC106



single recessed cable management 1U

▲ KMD104



back panel cable management 1U

▲ KMD106



back panel cable management 1U

▲ KMD108



back panel cable management 1U

▲ KME101



brush cable management

▲ KMG101



blind panel 1U

▲ KMC107



12 ports metal cable management 1U

▲ KMX-GXQ5



velcro cable tie 5

▲ KMX-GXQ6



velcro cable tie 6

Horizontal Cable Management

Order Information

Part Number	Description	Standard Color	Inner Box	Carton	Carton Measurement (L×W×H)	Carton Weight
KMC101	single recessed cable management 1U	Black	1PCS	20PCS	L 53.5cm × W 31.3cm × H 23.4cm	9.20KG
KMC103	single recessed cable management 1U	Black	1PCS	20PCS	L 53.5cm × W 31.3cm × H 23.4cm	9.20KG
KMC104	single recessed cable management 1U	Black	1PCS	20PCS	L 53.5cm × W 31.3cm × H 23.4cm	9.20KG
KMC105	metal cable management 1U	Black	1PCS	10PCS	L 53.5cm × W 31.3cm × H 23.4cm	9.20KG
KMC108	single recessed cable management 1U	Black	1PCS	20PCS	L 53.5cm × W 31.3cm × H 23.4cm	9.20KG
KMD104	back panel cable management 1U	Black	1PCS	10PCS	L 53.5cm × W 31.3cm × H 23.4cm	4.00KG
KMD106	back panel cable management 1U	Black	1PCS	10PCS	L 53.5cm × W 31.3cm × H 23.4cm	3.80KG
KMD108	back panel cable management 1U	Black	1PCS	10PCS	L 53.5cm × W 31.3cm × H 23.4cm	3.80KG
KME101	brush cable management	Black	4PCS	40PCS	L 53.5cm × W 31.3cm × H 23.4cm	3.80KG
KMG101	blind panel 1U	Black	5PCS	25PCS	L 53.5cm × W 31.3cm × H 23.4cm	3.80KG
KMX-GXQ5	velcro cable tie 5	Gray	30PCS	700PCS	L 53.5cm × W 31.3cm × H 23.4cm	3.80KG
KMX-GXQ6	velcro cable tie 6	Gray	30PCS	700PCS	L 53.5cm × W 31.3cm × H 23.4cm	3.80KG
KMC107	12 ports metal cable management 1U	Black	1PCS	10PCS	L 53.5cm × W 31.3cm × H 23.4cm	9.20KG

Wring Blocks

Product Description

- Comply with T568A&T568B standards, suitable for interaction and termination of horizontal cabling between devices, equipment and centralized points
- Solid, with easy installation designing, easy to manage, cost-saving

Technical Characteristics

- Polycarbonate material, almond
- With phosphor bronze material IDC, durability is 250 matching recycles
- Accept 22, 24, 26AWG(0.4, 0.5, 0.64mm) wires
- Comply with T568A&T568B standards
- Use 110 single-pair termination tool

▲KWB050-A3W



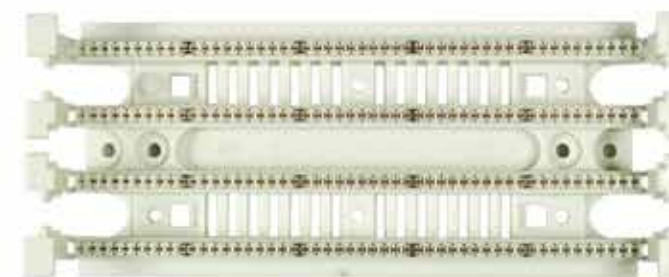
50 pairs 110 wring block without legs

▲KWB050-A3Y



50 pairs 110 wring block with legs

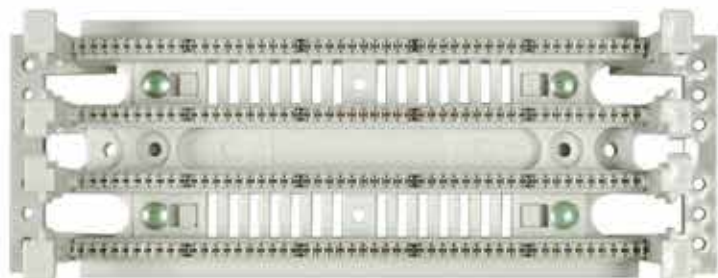
▲KWB100-A3W



100 pairs 110 wring block without legs

Wring Blocks

▲KWB100-A3Y



100 pairs 110 wring block with legs

▲KWB100-A4



100 pairs 110 rank mount wring block

▲KCBB04



4 pairs connecting block

▲KCBB05



5 pairs connecting block

Order Information

Part Number	Description	Standard Color	Inner Box	Carton	Carton Measurement (L x W x H)	Carton Weight
KWB050-A3W	50 pairs 110 wring block without legs	Beige	2PCS	20PCS	L 53.5cm x W 31.3cm x H 23.4cm	5.00KG
KWB050-A3Y	50 pairs 110 wring block with legs	Beige	2PCS	20PCS	L 53.5cm x W 31.3cm x H 23.4cm	5.70KG
KWB100-A4	100 pairs 110 rank mount wring block	Beige	1PCS	10PCS	L 53.5cm x W 31.3cm x H 23.4cm	9.00KG
KWB100-A3W	100 pairs 110 wring block without legs	Beige	1PCS	10PCS	L 53.5cm x W 31.3cm x H 23.4cm	5.00KG
KWB100-A3Y	100 pairs 110 wring block with legs	Beige	1PCS	10PCS	L 53.5cm x W 31.3cm x H 23.4cm	5.70KG
KCBB04	4 pairs connecting block	Beige	200PCS	2000PCS	L 53.5cm x W 31.3cm x H 23.4cm	11.00KG
KCBB05	5 pairs connecting block	Beige	200PCS	2000PCS	L 53.5cm x W 31.3cm x H 23.4cm	11.00KG

UK Style Faceplate

Product Description

- Suitable for different kinds of modular jack installation, widely used in working area network cabling

Technical Characteristics

- Size 86mmx86mm
- Embedded surface box; easy to install; panel surface with embedded charts and label positions for easy identification of data and voice terminal
- With anti-dust sliding port-cover
- Made of high quality ABS&PC plastic to avoid scratching, with detachable-surface faceplate

▲ KOD111



wall style 1-port dustproof Faceplate

▲ KOD112



wall style 2-port dustproof Faceplate

▲ KOD121



wall style 1-port dustproof Faceplate

▲ KOD122



wall style 2-port dustproof Faceplate

▲ KOD123



wall style 3-port Faceplate

▲ KOD124



wall style 4-port dustproof Faceplate

▲ KOD131



wall style 1-port cable TV Faceplate(with the general TV)

▲ KOD132



wall style 2-port acr-shaped Faceplate

▲ KOD141



wall style 1-port dustproof Faceplate

▲ KOD142



wall style 2-port dustproof Faceplate

▲ KOD141-GD



wall style 1-port dustproof Faceplate

▲ KOD142-GD



wall style 2-port dustproof Faceplate

UK Style Faceplate

▲ KOD171



wall style Video Faceplate(with audio-video jack)

▲ KOE122



wall style 2-port bevel Faceplate

▲ KOE122-P



empty accessory

▲ KOE132



wall style double ports bevel Faceplate

Product Description

- Suitable for different kinds of modular jack installation, widely used in working area network cabling

Technical Characteristics

- America 120 style
- Embedded surface box, easy to install; panel surface with embedded charts and label positions for easy identification of data and voice terminal
- With anti-dust sliding port-cover
- Made of high quality ABS&PC plastic to avoid scratching, with detachable-surface faceplate

▲ KOS101



wall style 1-port Faceplate

▲ KOS102



wall style 2-port Faceplate

▲ KOS103



wall style 3-port Faceplate

▲ KOS104



US wall style 4-port Faceplate

▲ KOS106



wall style 6-port Faceplate

Australian Style Faceplate

Product Description

- Suitable for different kinds of modular jack installation, widely used in working area network cabling

Technical Characteristics

- 116x75 style
- Embedded surface box, easy to install
- With anti-dust sliding port-cover
- Made of high quality ABS&PC plastic to avoid scratching, with detachable-surface faceplate

▲ KOA100



Wall style Australian style no port Faceplate

▲ KOA101



Wall style Australian style 1-port Faceplate

▲ KOA102



Wall style Australian style 2-port Faceplate

▲ KOA103



Wall style Australian style 3-port Faceplate

▲ KOA104



Wall style Australian style 4-port Faceplate

▲ KOA106



Wall style Australian style 6-port Faceplate

French Style Faceplate

Product Description

- Suitable for different kinds of modular jack installation, widely used in working area network cabling

Technical Characteristics

- 45x45 style
- Embedded surface box, easy to install; panel surface with embedded charts and label positions for easy identification of data and voice terminal
- With anti-dust sliding port-cover
- Made of high quality ABS&PC plastic to avoid scratching, with detachable-surface faceplate

▲ KOH121



French 1-port straight Faceplate

▲ KOH122



French 2-port straight Faceplate

▲ KOH111



French 1-port oblique Faceplate

▲ KOH112



French 2-port oblique Faceplate

Other Style Faceplate

Product Description

- Suitable for LKS119 modular jack installation, widely used in working area network cabling

Technical Characteristics

- Embedded surface box, easy to install; panel surface with embedded charts and label positions for easy identification of data and voice terminal
- With anti-dust sliding port-cover
- Made of high quality ABS&PC plastic to avoid scratching, with detachable-surface faceplate

▲ KOG112-WH



B0 style 2-port shielded dustproof Faceplate

▲ KOG101-GR



1P industry style Faceplate Grey

Back Box

Product Description

- Suitable for different kinds of faceplate installation, widely used in working area network cabling

Technical Characteristics

- Fit for installation of different kinds of faceplate
- Made of high quality ABS&PC plastic to avoid scratching, with detachable-surface faceplate

▲ KOX186-1



86 style back box

▲ KOX112-1



120 style back box

▲ KOX112-2



120 style back box

Surface Mount Boxes

▲ KOZ101



1-port surface Faceplate

▲ KOZ102



2-port surface Faceplate

▲ KOZ121



1-port surface Faceplate

▲ KOZ122



2-port surface Faceplate

Order Information

Part Number	Description	Standard Color	Carton	Carton Measurement (L x W x H)	Carton Weight
KOX106-1	86 style back box	White	100PCS	L 53.5cm x W 31.3cm x H 23.4cm	6.50KG
KOX112-1	120 style back box	White	100PCS	L 53.5cm x W 31.3cm x H 23.4cm	6.00KG
KOX112-2	120 style back box	White	100PCS	L 53.5cm x W 31.3cm x H 23.4cm	6.00KG
KOZ101	1-port surface Faceplate	White	200PCS	L 53.5cm x W 31.3cm x H 23.4cm	5.00KG
KOZ102	2-port surface Faceplate	White	100PCS	L 53.5cm x W 31.3cm x H 23.4cm	5.50KG
KOZ121	1-port surface Faceplate	White	250PCS	L 53.5cm x W 31.3cm x H 23.4cm	5.50KG
KOZ122	2-port surface Faceplate	White	200PCS	L 53.5cm x W 31.3cm x H 23.4cm	6.50KG

TOOLS

Product Description

▲ The 110 single-pair impact tool is designed to seat 110 connecting blocks and terminate and cut cable on 110 wiring blocks. Saving time and money. The tool features an easy way to hold, ergonomically designed handle that helps reduce fatigue when trimming wire or seating connection blocks to the wiring base.

▲ KTLA11



110 style impact tools

▲ KTLA03



Krone impact and punch down tool

▲ KTLA07



Quick Crimp tools

▲ KTLB01



110 style impact tools

▲ KTLC03



RJ45 Crimp tools

▲ KTLC11



RJ45 and RJ11 Crimp tools

TOOLS

▲ KTLD01



Cable stripper

Order Information

Part Number	Description	Standard Color	Inner Box	Carton	Carton Measurement (L × W × H)	Carton Weight
KTLA11	110 style impact tools	Blue	5PCS	50PCS	L 62cm × W 29cm × H 30cm	8.00KG
KTLA03	Krone impact end punch down tool	White	5PCS	50PCS	L 62cm × W 29cm × H 30cm	6.00KG
KTLA07	Quick hit line tool	Blue	5PCS	50PCS	L 62cm × W 29cm × H 30cm	27.00KG
KTLB01	110 style impact tools	Black	5PCS	50PCS	L 68cm × W 33cm × H 30cm	27.00KG
KTLC03	RJ45 Crimp tools	Blue	5PCS	50PCS	L 53.5cm × W 31.3cm × H 23.4cm	15.00KG
KTLC11	RJ45 and RJ11 Crimp tools	Blue	5PCS	50PCS	L 53.5cm × W 31.3cm × H 23.4cm	29.20KG
KTLD01	Cable stripper	Black	10PCS	100PCS	L 53.5cm × W 31.3cm × H 23.4cm	6.00KG